

DX6i / PPJoy / SmartPropoPlus / ClearView RC

The purpose of this document is to explain how to use a DX6i remote with a very usable, very customizable, budget friendly ClearView Flight Simulator. This configuration may work with other flight simulators however this has only been tested using ClearView for both Helicopters and Airplanes.

HARDWARE

1. Spektrum DX6i Remote
2. [Male to Male](#) Audio Cable
3. Dell OPTIPLEX 745 with onboard Audio Input

SOFTWARE

Below is a list of software needed. You can download the appropriate software from the listed links.

1. [PPJoy](#)
2. [SmartPropoPlus](#)
3. [ClearView](#)
4. Windows 7 32bit (I am sure Windows XP, Vista, and 7 will all work no matter 32 or 64)

CONFIGURE DX6i

I created 1 profile on my remote which seems to fly both the airplane and the helicopters perfectly. I labeled it **SIM** and set the model to an AirPlane. I left all settings completely default except for the **FLAPS** they are configured like the following

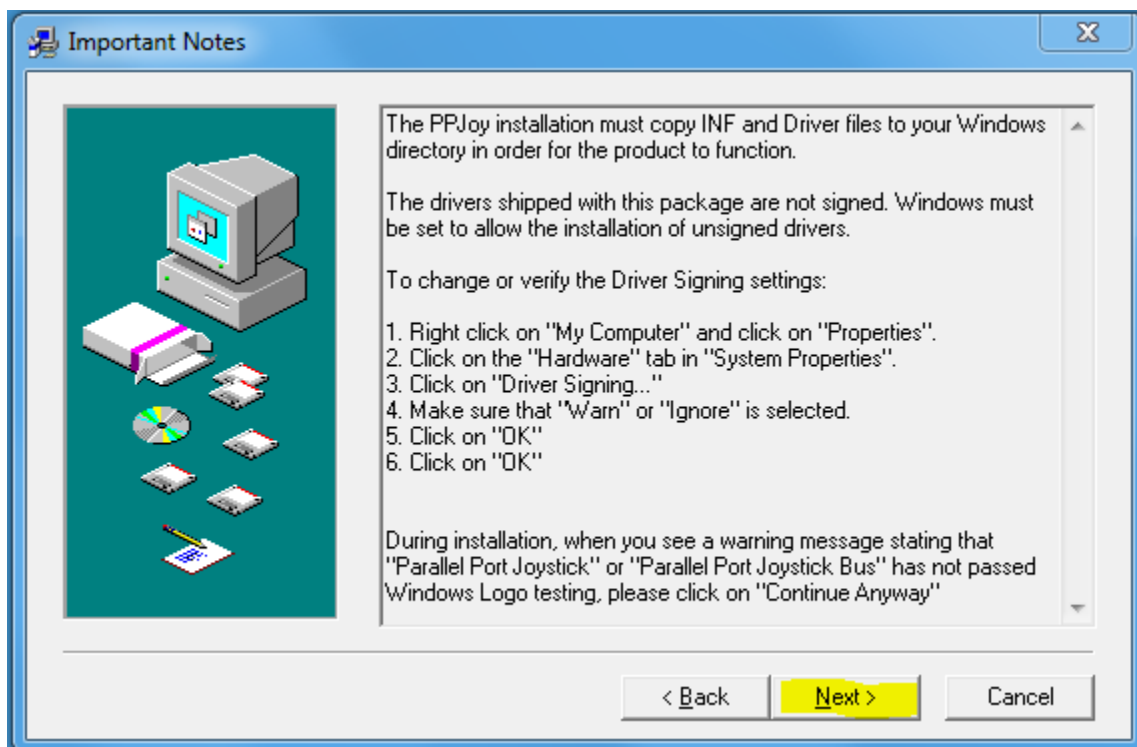
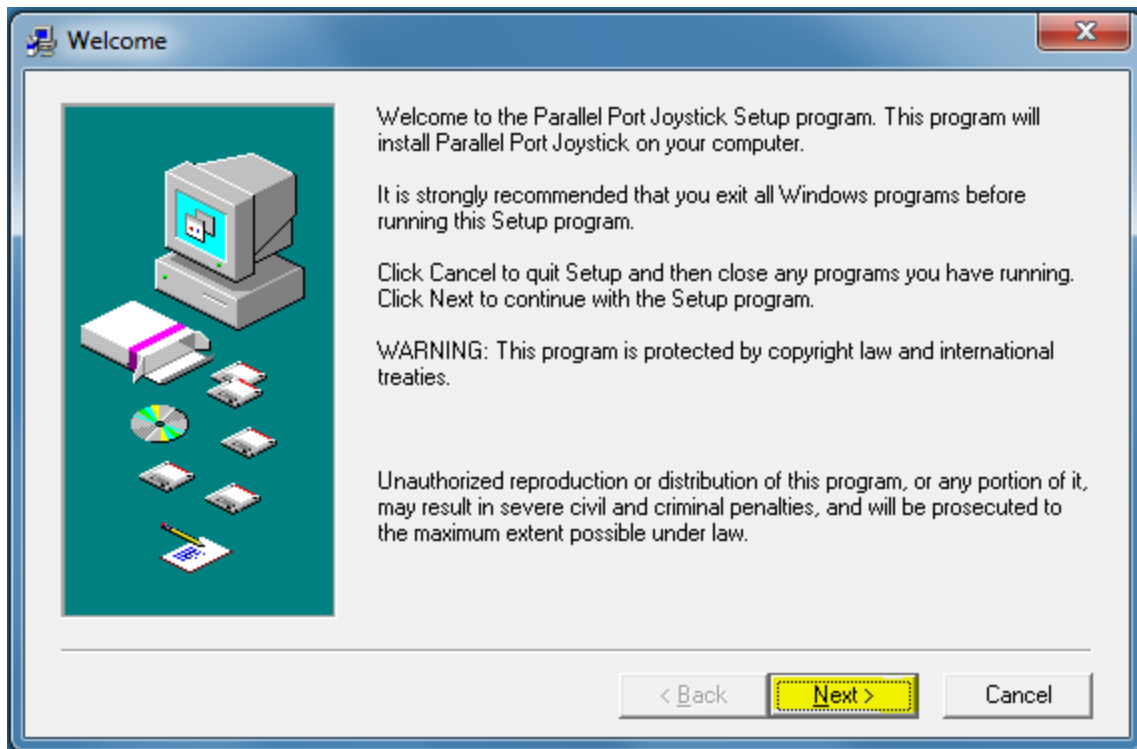
NORM ↑100

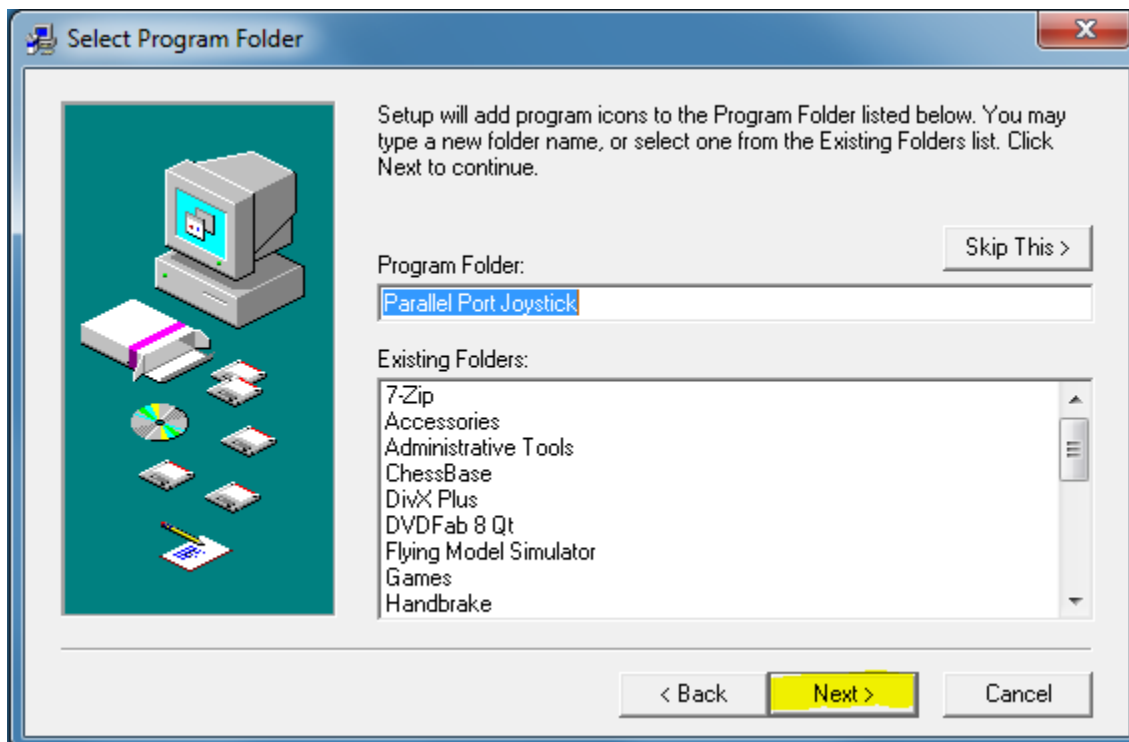
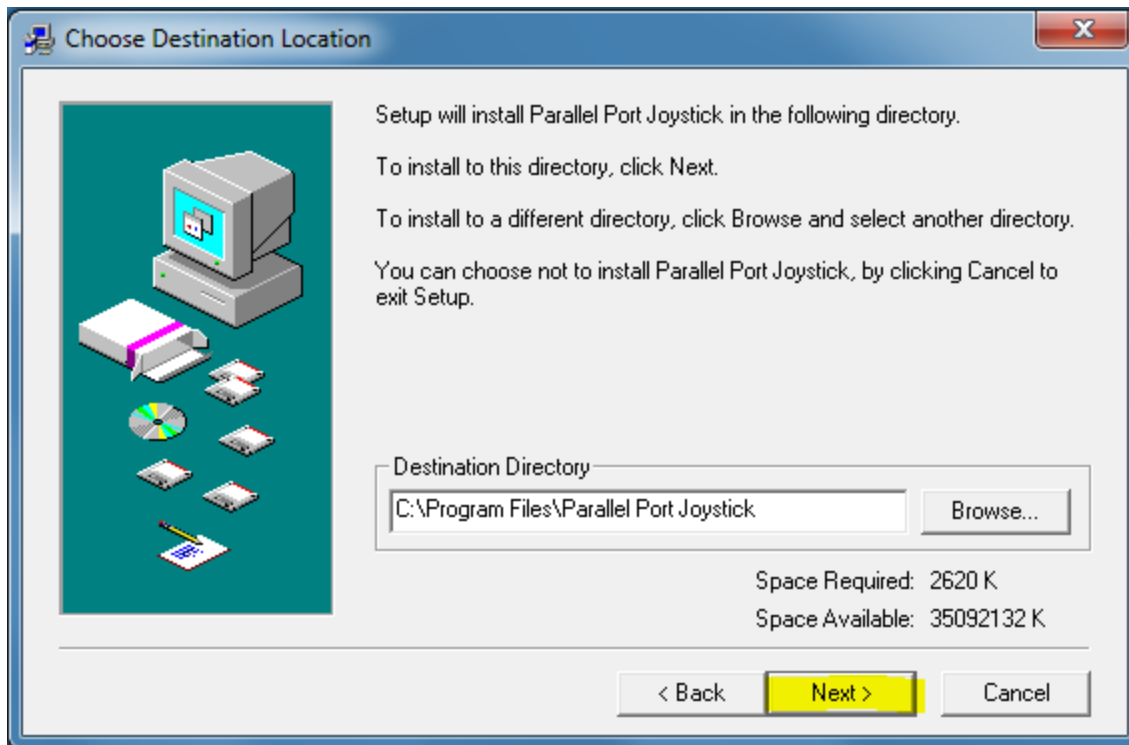
LAND ↓100

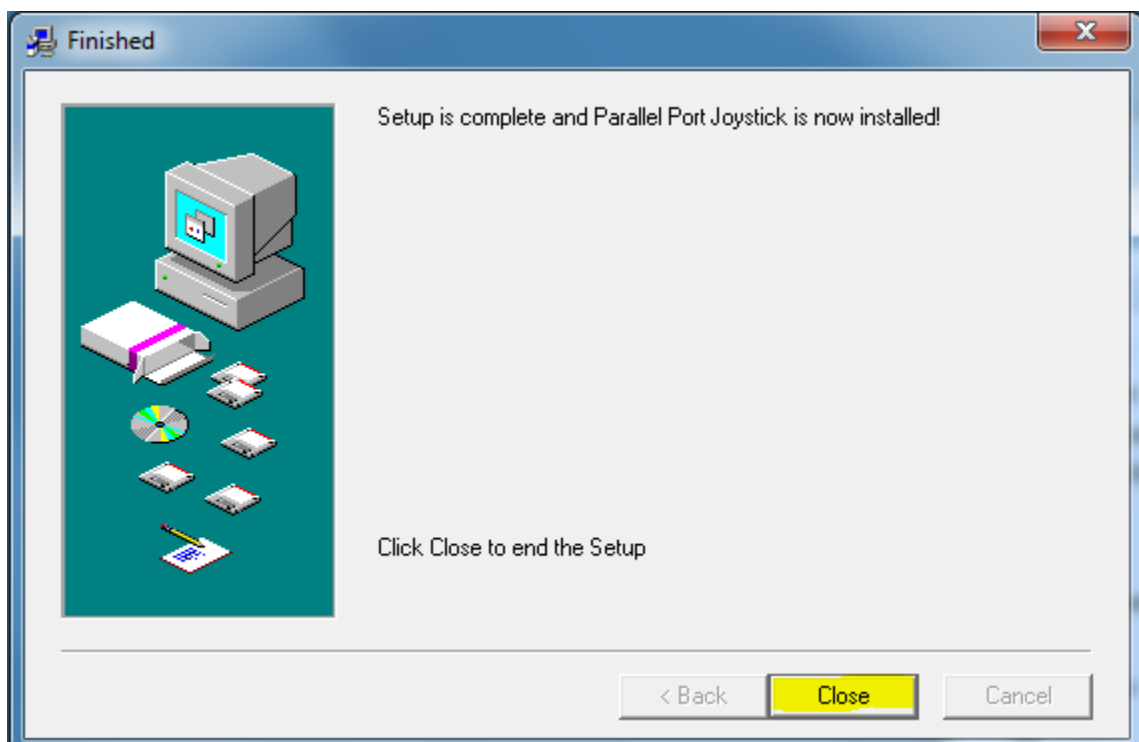
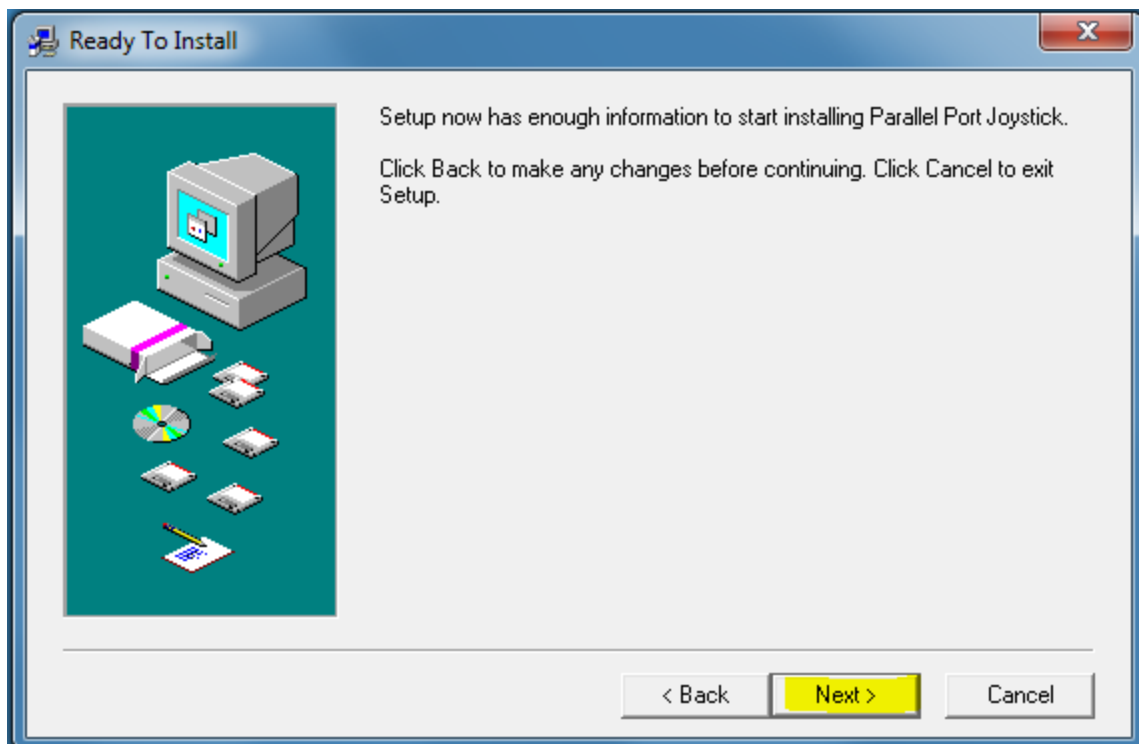
This allows for the FLAP switch to work perfectly with the ClearView Simulator.

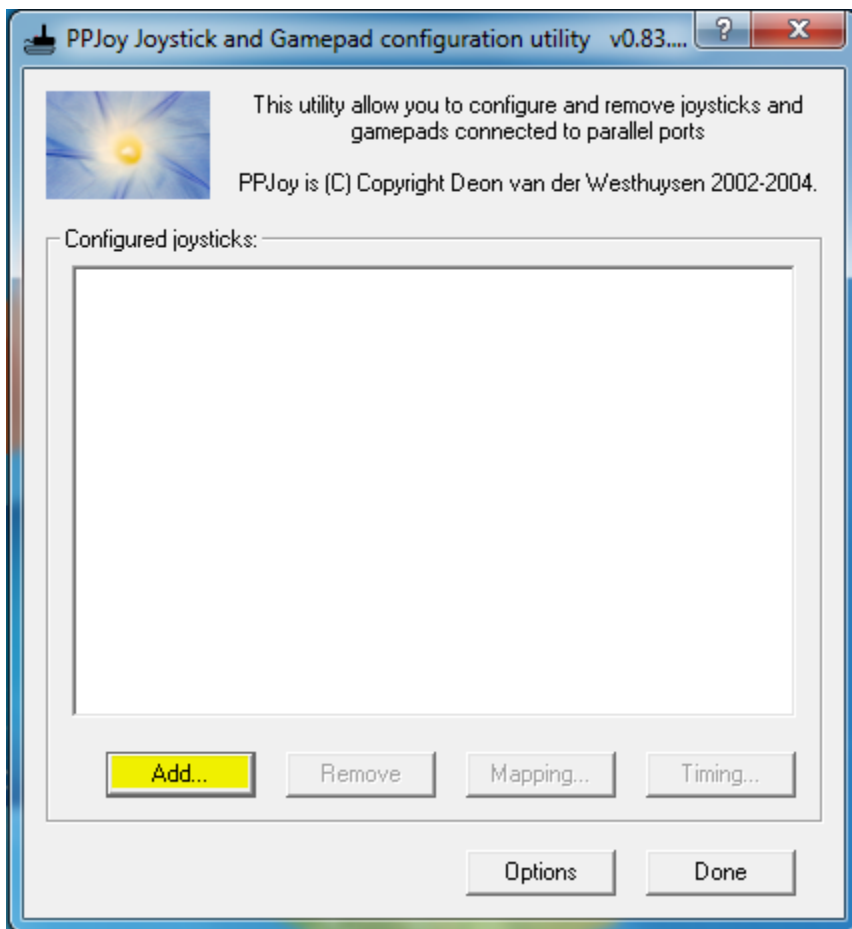
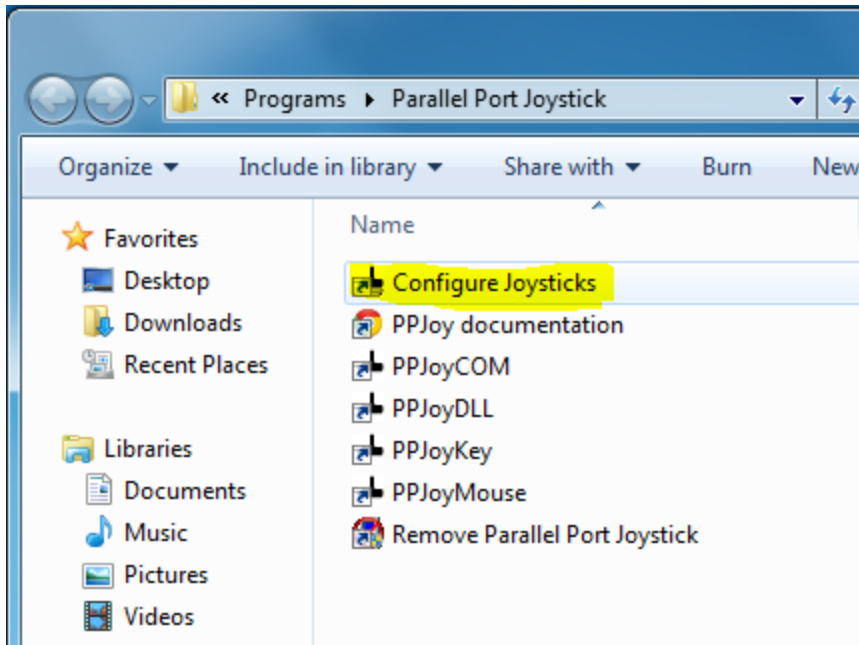
INSTALL PPJoy

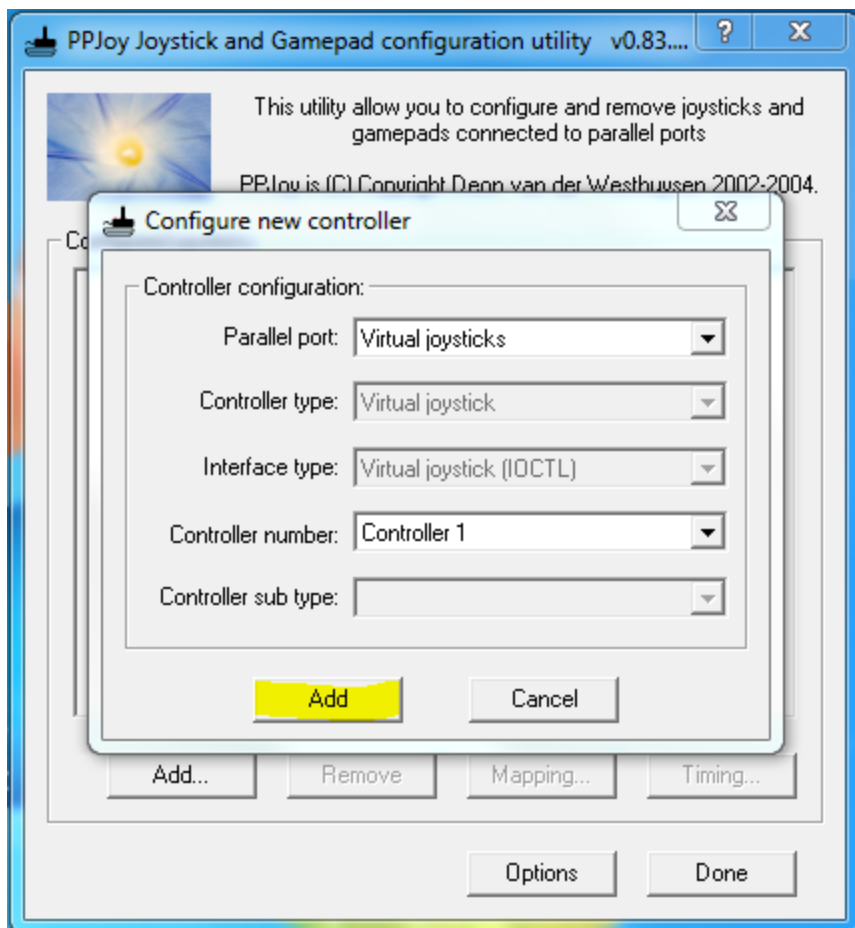
Run Setup.exe

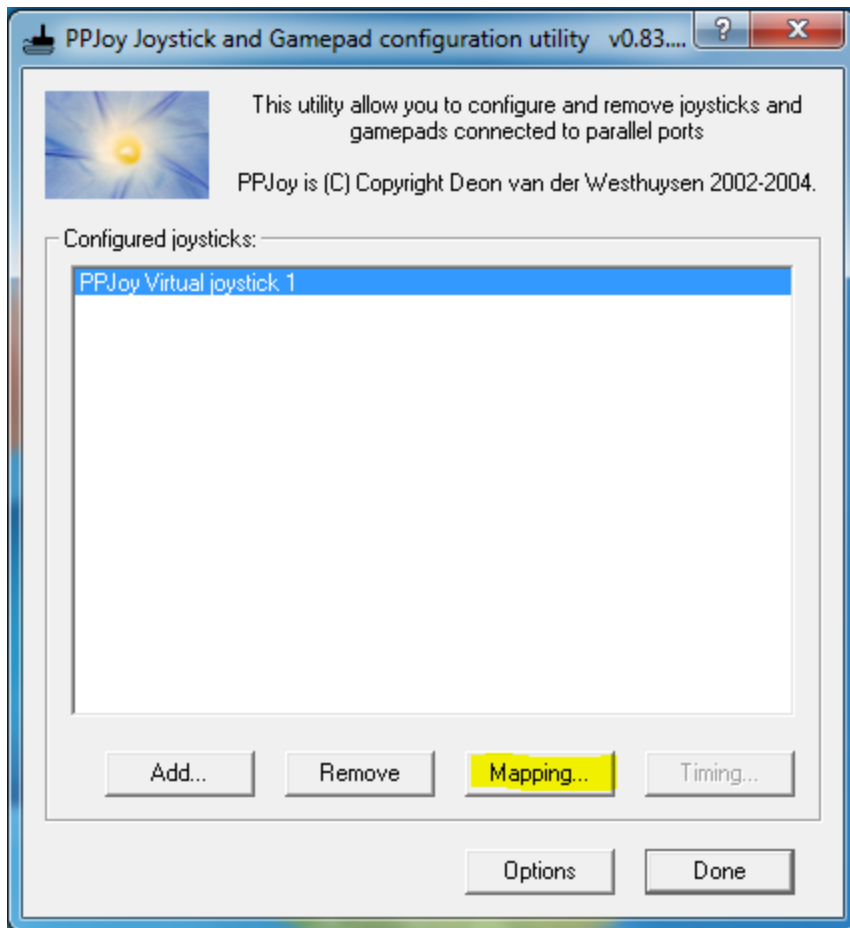


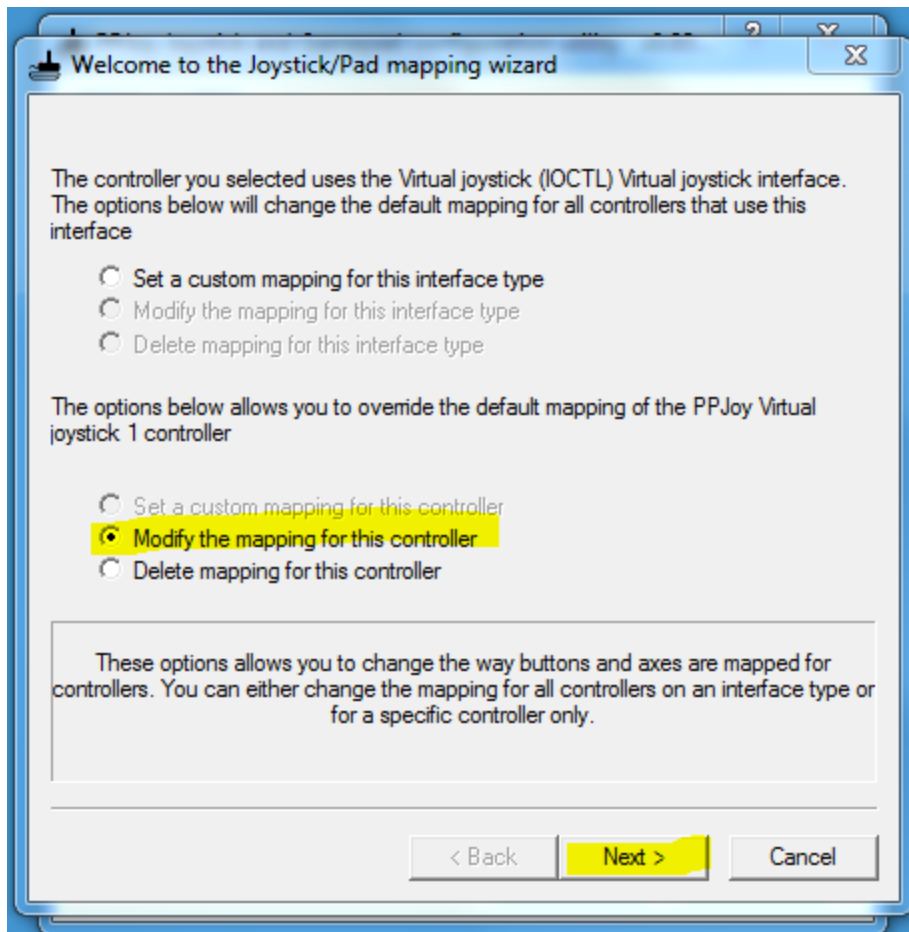












Define the number and type of axes, buttons and POV hats

6 Axes 2 Buttons 0 POV hats

Axis 1: X Axis

Axis 2: Y Axis

Axis 3: Rudder

Axis 4: X Rotation

Axis 5: Y Rotation

Axis 6: Z Rotation

Axis 7:

Axis 8:

Select the number of axes and buttons.
Also select the axis type to be reported for each axis.

< Back Next > Cancel

Configure mapping for axes

	Min		Max
X Axis	Analog 0	Scan	
Y Axis	Analog 1	Scan	
Rudder	Analog 2	Scan	
X Rotation	Analog 3	Scan	
Y Rotation	Analog 4	Scan	
Z Rotation	Analog 5	Scan	
	nothing	Scan	
	nothing	Scan	

Select the analog or digital values that will be reported as axis movements.
You can also click on SCAN next to the corresponding button and then perform the action you want reported as axis movements.

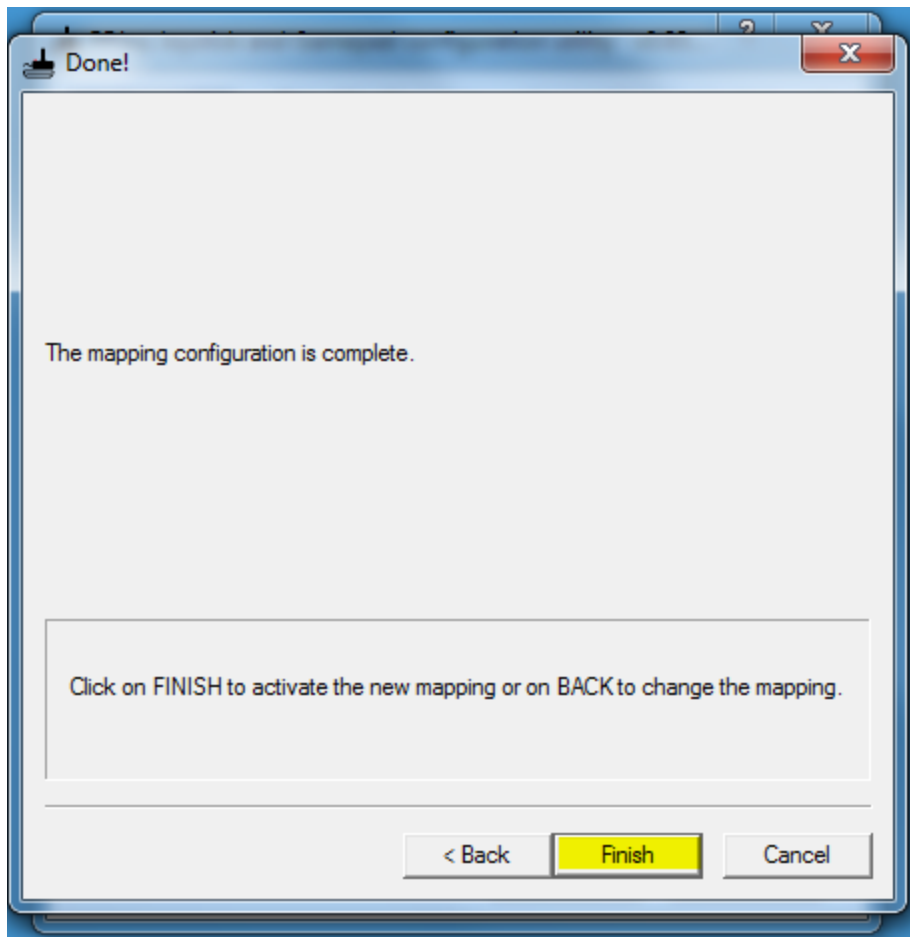
< Back Next > Cancel

Configure mapping for buttons

Button 1: Analog 7 min	Scan	Button 9: nothing	Scan
Button 2: Analog 8 min	Scan	Button 10: nothing	Scan
Button 3: nothing	Scan	Button 11: nothing	Scan
Button 4: nothing	Scan	Button 12: nothing	Scan
Button 5: nothing	Scan	Button 13: nothing	Scan
Button 6: nothing	Scan	Button 14: nothing	Scan
Button 7: nothing	Scan	Button 15: nothing	Scan
Button 8: nothing	Scan	Button 16: nothing	Scan

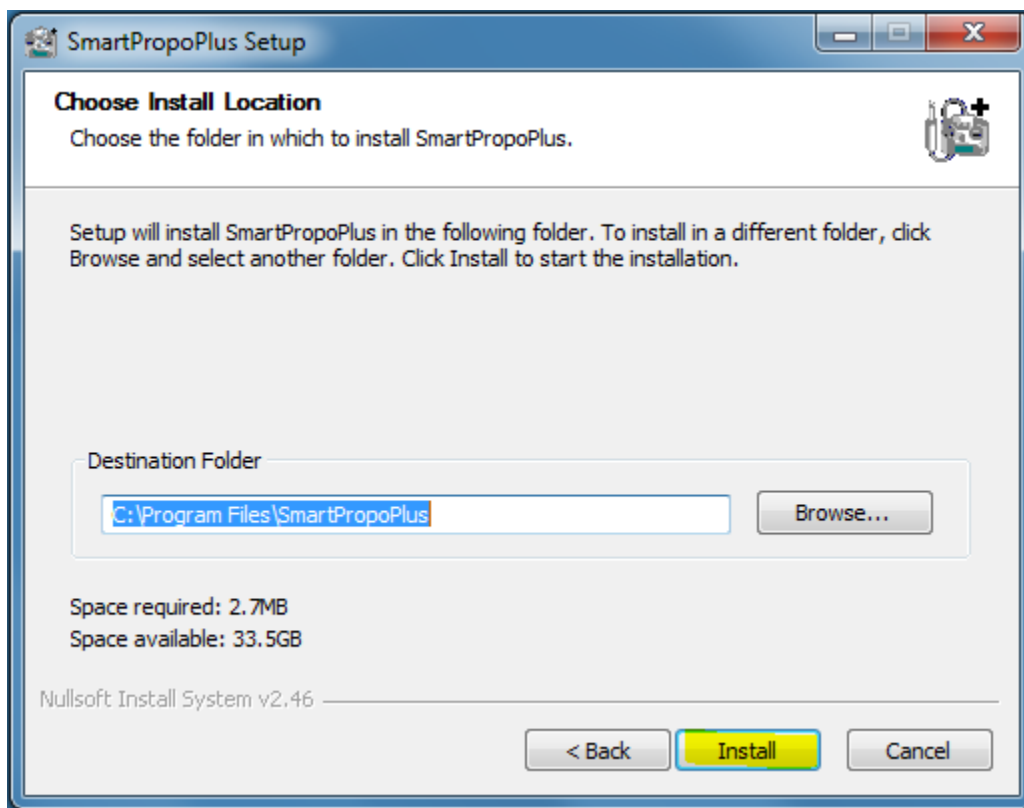
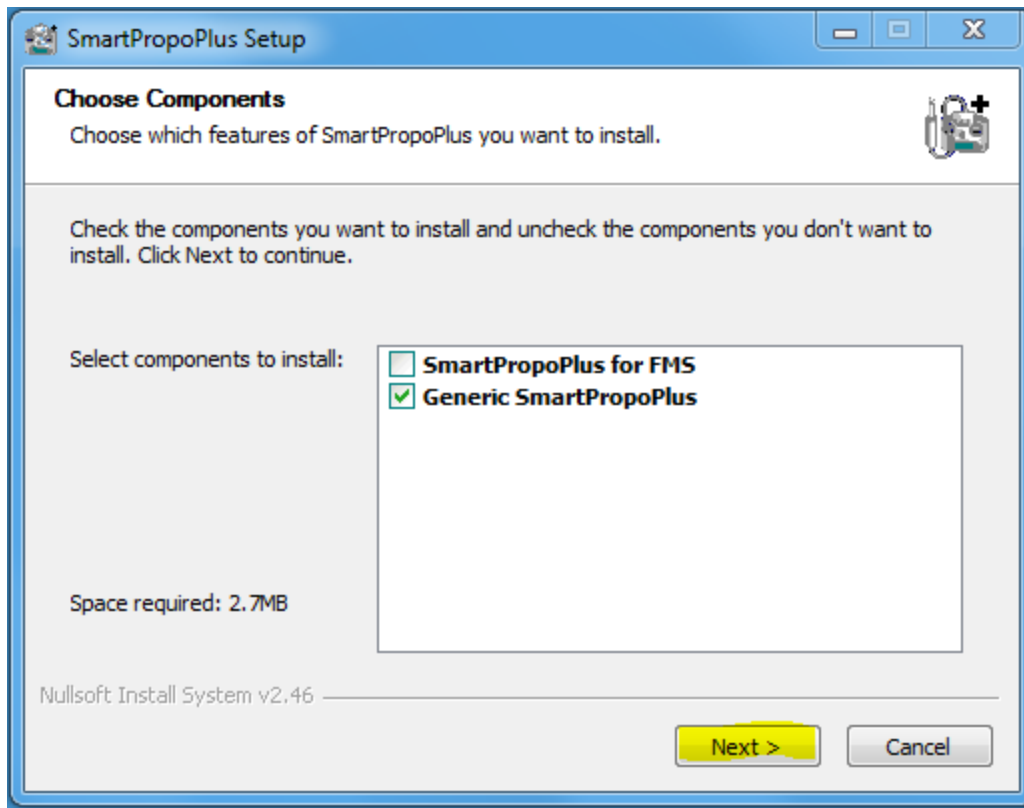
Select the analog or digital values that will be reported as button presses.
You can also click on SCAN next to the corresponding button and then perform the action you want reported as a button press.

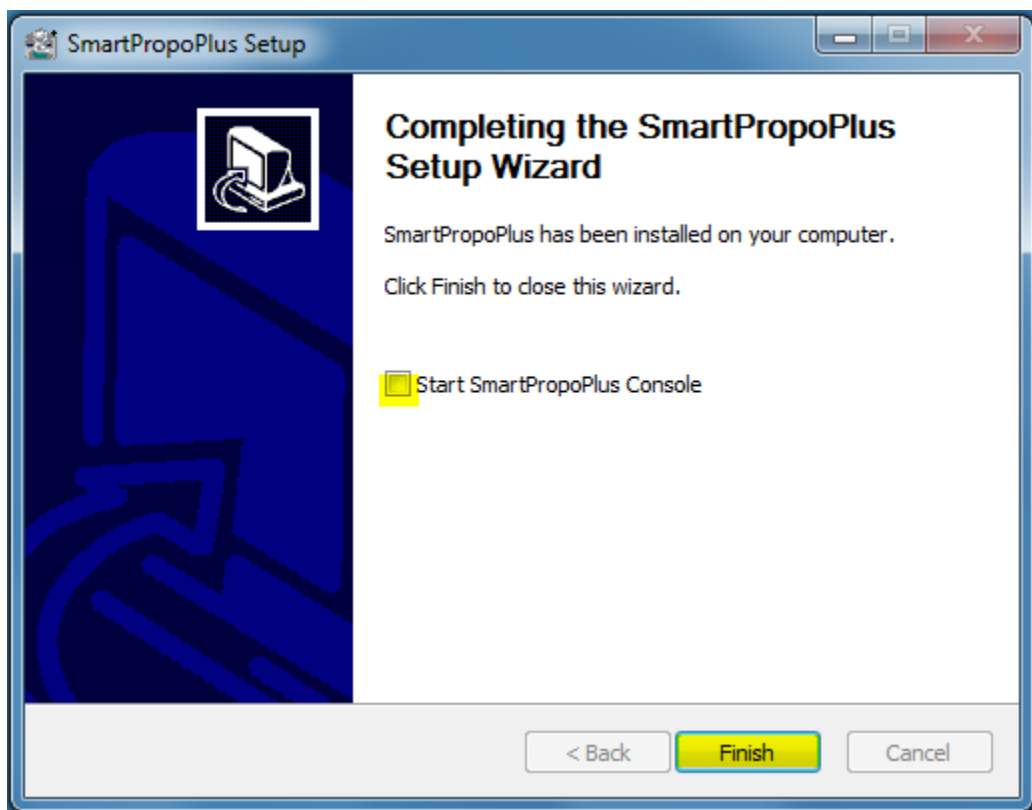
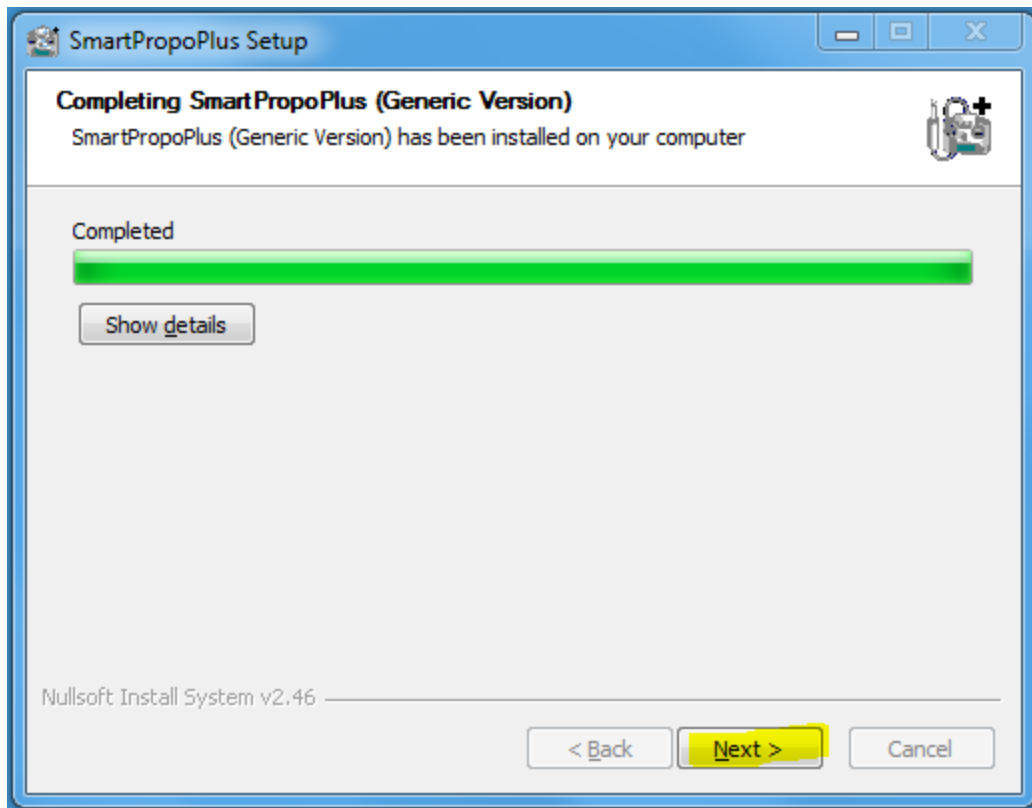
< Back Next > Cancel



INSTALL SmartPropoPlus

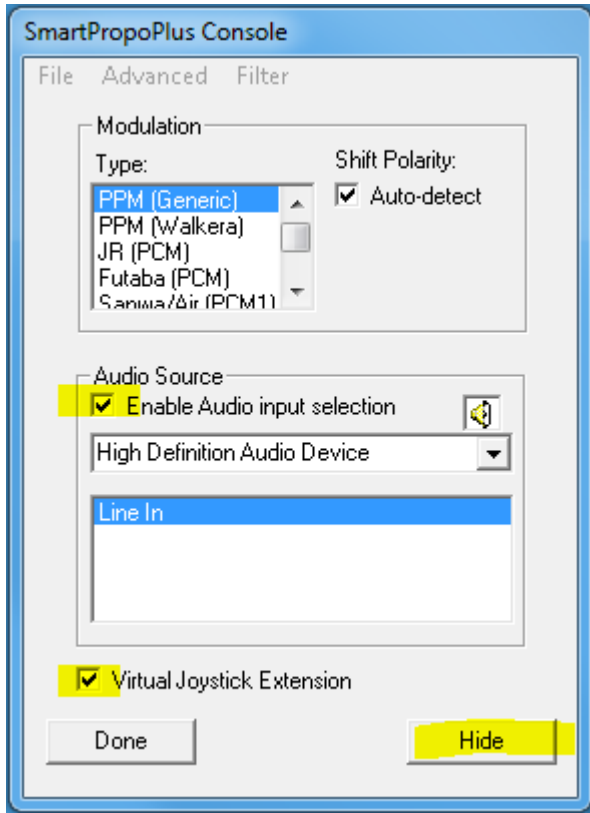
Run Setup.exe



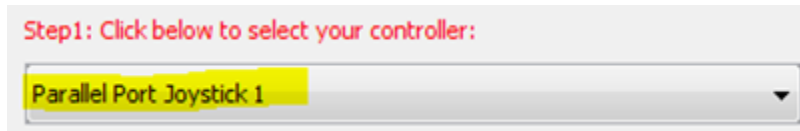


CONFIGURE SOFTWARE

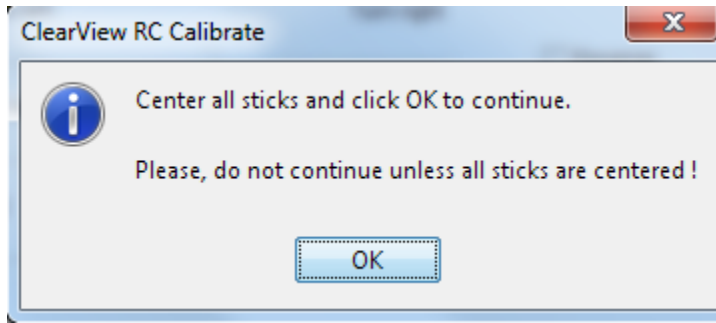
1. Start with your DX6i turned **OFF**. Make sure that both the **GEAR** and **FLAP** switch are set to **0**. Then plug 1st end of the Audio cable into **Audio-In** on your PC and the 2nd end into the back of the Remote where it says **Trainer**. Your remote should power on automatically.
2. Launch SppConsole from desktop and check the following highlighted boxes and then click **Hide**



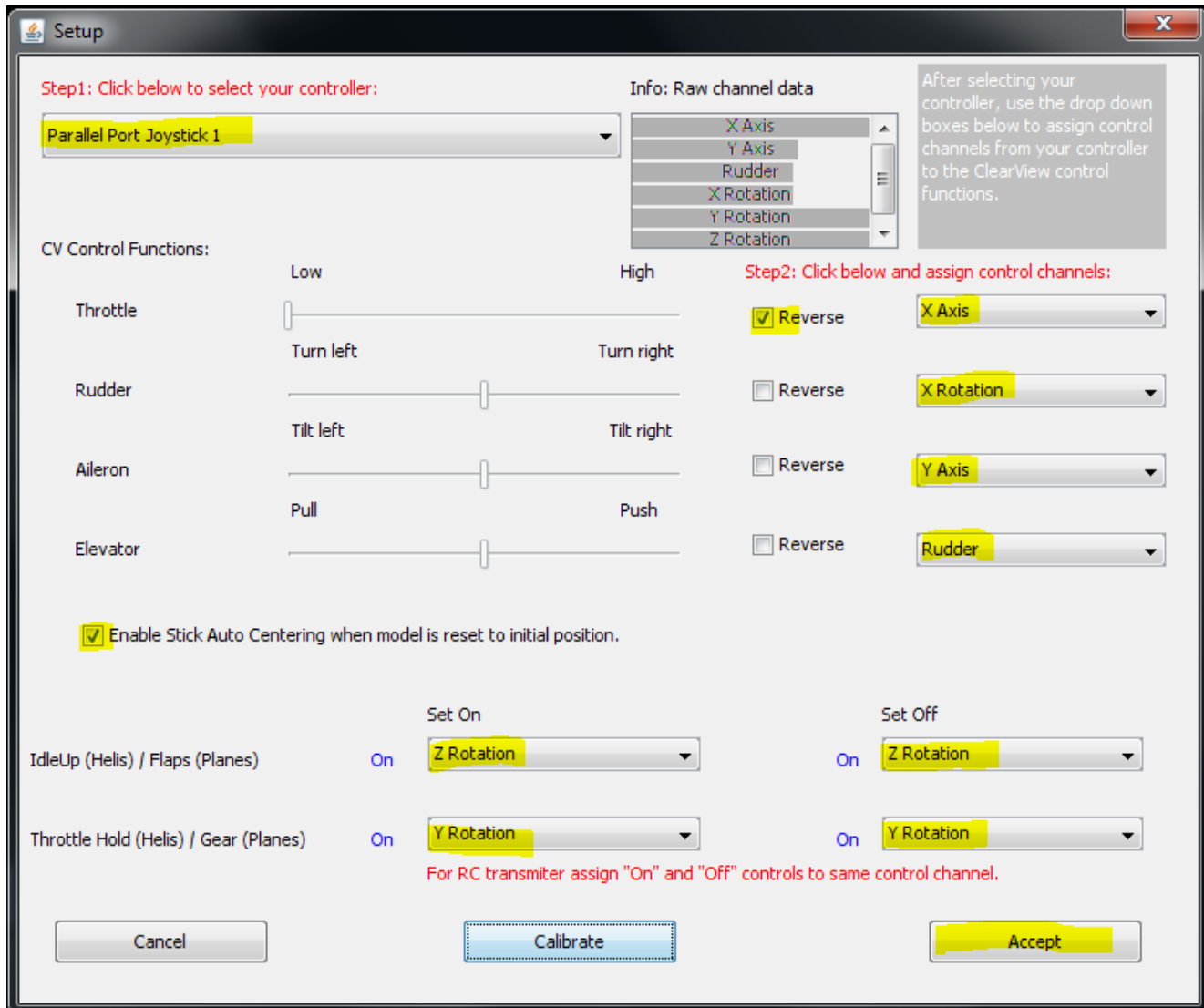
3. Launch ClearView then click Setting < Controller Setup. Change your Controller to Parallel Port Joy Stick



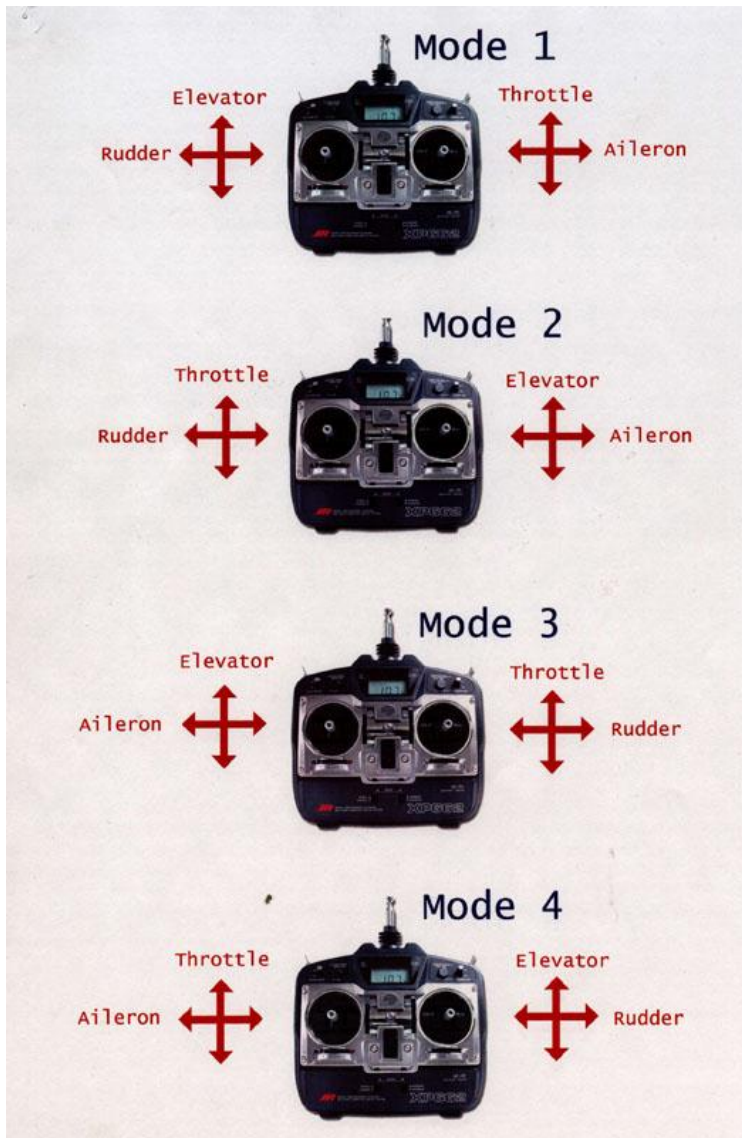
4. Next click on **Calibrate** and follow the instructions on screen



5. Configure your settings per the following for Mode 2



6. If you have a different Mode Remote check the settings per this image



STARTING APPLICATION

1. Start with Remote **OFF**
2. Plug in Audio Cable to Audio-In on PC and then to back of Remote to Trainer Port
3. Launch SppConsole and click Hide
4. Launch Simulator and have fun

STOPPING APPLICATION

1. Stop Simulator
2. Close SppConsole will be in System Tray
3. Disconnect Audio Cable from Remote